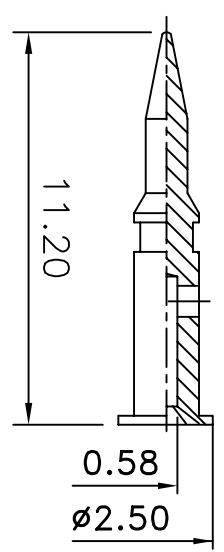
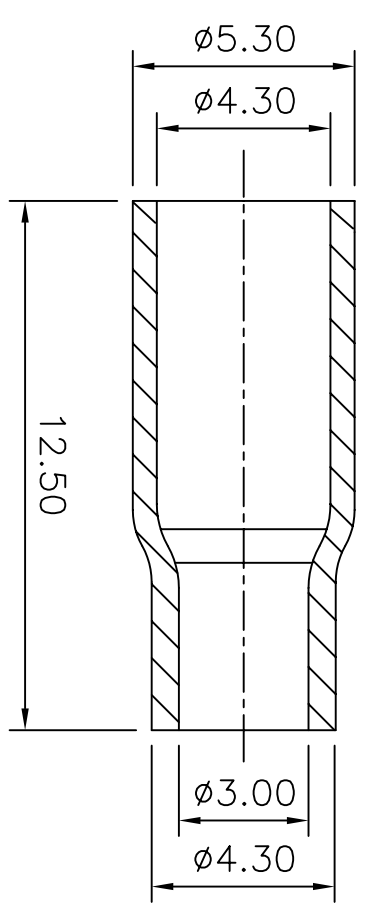
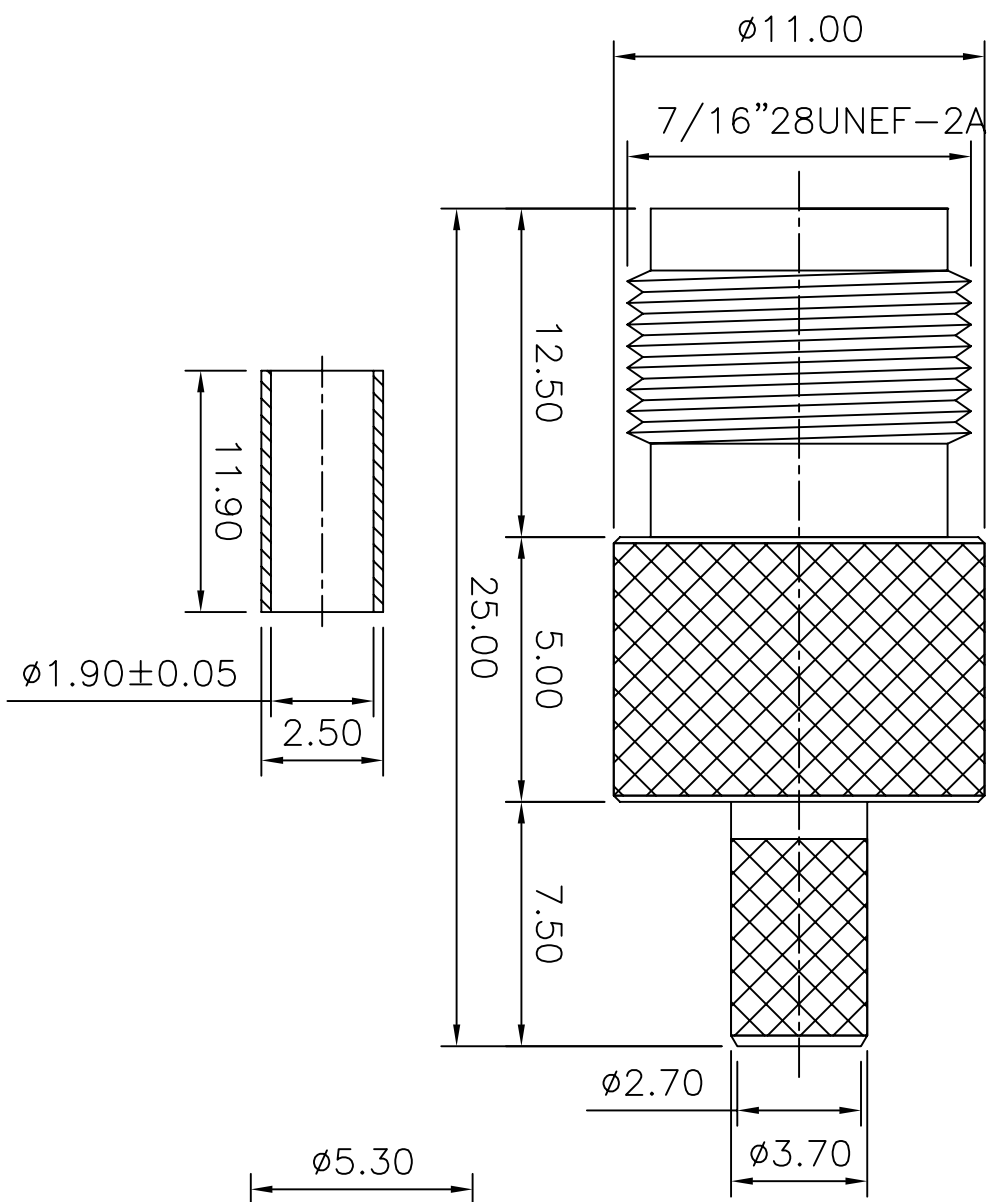


REV	DESCRIPTION	DRAWN	DATE

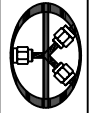


NO	Description	Qty	Material	Finish
5	Ferrule(F-010)	1	Brass	Nickel
4	Press fit washer(W-005)	1	Brass	Nickel
3	Dielectric	1	Teflon	None
2	Pin(C-02040)	1	Brass	Gold
1	Body(B-07039)	1	Brass	Nickel

UNLESS OTHERWISE SPECIFIED
 1.REMOVE ALL BURRS
 2.BREAK ALL CORNERS & EDGES CO.15 MAX.
 3.CHAMFER 15° & LAST THREADS 45°.
 4.DIAMETERS ON COMMON CENTERS.
 TO BE CONCENTRIC WITH DIMENSIONS ARE AFTER PLATING.

* MAJOR DIMENSION UNLESS OTHERWISE NOTED. TOLERANCES
 0.5-6=±0.2
 6-30=±0.4
 30-120=±0.6
 120-315=±1.0
 ANGLES=±1°

APPROVED	CHECKED	DRAWN	DRAWN DATE
		Betty	06/12/07


華耀科技有限公司
 Hua Yao Technologies co.,Ltd

TITLE
 TNC FEMALE RP CRIMP

DRAWING NO. TNC-1512-6-L-RP-TGN
 FILE NO. D:\DWG\COMPOSE\TNC\TNC-1512-6-L-RP-TGN

REV A
 GL